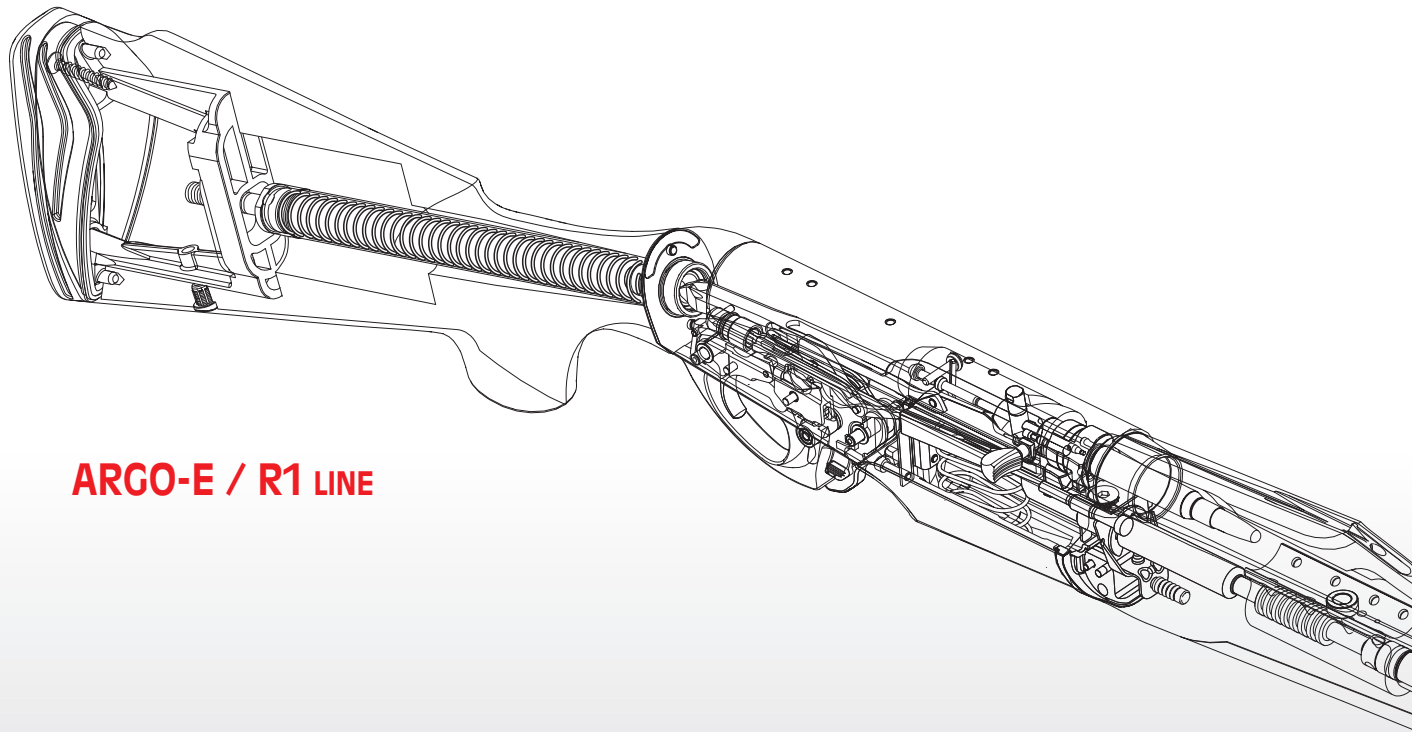


# ARGO-E | R1 LINE

 **Benelli**



**ARGO-E / R1 LINE**

 **Benelli**



## Index

<b>USE • MAINTENANCE</b> .....	1
Basic safety rules .....	2
Introduction .....	4
Operation .....	4
Assembly .....	5
Use .....	7
Rifle safety catch .....	7
Loading .....	8
Unloading procedure .....	9
Stripping of the rifle .....	10
Maintenance .....	13
Rifle assembly .....	14
Troubleshooting .....	16
Choice of ammunition .....	16

### ACCESSORIES AND ADJUSTMENTS:

Drop change (wood stock and Progressive Comfort stock) .....	17
Drop change (synthetic stock) .....	19
Fitting the sling attachment pin to the stock .....	20
Removing and changing the comb .....	21
Windage sight adjustment .....	21
Windage (lateral) sight adjustment .....	22
Elevation sight adjustment .....	22
Barrel replacement .....	23

<b>SPARE PARTS</b> .....	25
--------------------------	----





## BASIC SAFETY RULES

**WARNING: PLEASE READ THIS MANUAL BEFORE HANDLING YOUR FIREARM.**

**WARNING: FIREARMS CAN BE DANGEROUS AND CAN POTENTIALLY CAUSE SERIOUS INJURY, DAMAGE TO PROPERTY OR DEATH, IF HANDLED IMPROPERLY. THE FOLLOWING SAFETY RULES ARE AN IMPORTANT REMINDER THAT FIREARM SAFETY IS YOUR RESPONSIBILITY.**

### 1. NEVER POINT A FIREARM AT SOMETHING THAT IS NOT SAFE TO SHOOT.

Never let the muzzle of a firearm point at any part of your body or at another person. This is especially important when loading or unloading the firearm. When you are shooting at a target, know what is behind it. Some bullets can travel over a mile. If you miss your target or if the bullet penetrates the target, it is your responsibility to ensure that the shot does not cause unintended injury or damage.



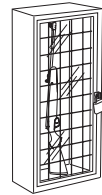
### 2. ALWAYS TREAT A FIREARM AS IF IT WERE LOADED.

Never assume that a firearm is unloaded. The only certain way to ensure that a firearm has the chamber empty is to open the chamber and visually and physically examine the inside to see if a round is present. Removing or unloading the magazine will not

guarantee that a firearm is unloaded or cannot fire. Shotguns and rifles can be checked by removing all rounds and by then opening and inspecting the chamber so that a visual inspection of the chamber for any remaining rounds can be made.

### 3. STORE YOUR FIREARM SO THAT CHILDREN CANNOT GAIN ACCESS TO IT.

It is your responsibility to ensure that children under the age of 18 or other unauthorized persons do not gain access to your firearm. To reduce the risk of accidents involving children, unload your firearm, lock it and store the ammunition in a separate locked location. Please note that devices intended to prevent accidents - for example, cable locks, chamber plugs, etc., - may not prevent use or misuse of your firearm by a determined person. Firearm storage in a steel gun safe may be more appropriate to reduce the likelihood of intentional misuse of a firearm by an unauthorized child or person.



### 4. NEVER SHOOT AT WATER OR AT A HARD SURFACE.

Shooting at the surface of water or at a rock or other hard surface increases the chance of ricochets or fragmentation of the bullet or shot, which can result in the projectile striking an unintended or peripheral target.



### 5. KNOW THE SAFETY FEATURES OF THE FIREARM YOU ARE USING, BUT REMEMBER: SAFETY DEVICES ARE NOT A SUBSTITUTE FOR SAFE HANDLING PROCEDURES.

Never rely solely on a safety device to prevent an accident. It is imperative that you know and use the safety features of the particular firearm you are handling, but accidents can best be prevented by following the safe handling procedures described in these safety rules and elsewhere in the product manual.

To further familiarize yourself with the proper use of this or other firearms, take a Firearms Safety Course taught by an expert in firearms use and safety procedures.

### 6. PROPERLY MAINTAIN YOUR FIREARM.

Store and carry your firearm so that dirt or lint does not accumulate in the working parts. Clean and oil your firearm, following the instructions provided in this manual, after each use to prevent corrosion, damage to the barrel or accumulation of impurities which can prevent use of the gun in an emergency. Before loading your firearm, always check the barrel internal part and the chamber to ensure that they are clean and free from obstructions. Firing with an obstruction in the barrel or chamber can rupture the barrel and injure you or others nearby. In the event you hear an unusual noise when shooting, stop firing immediately, engage the manual safety and unload the firearm.



Make sure the chamber and barrel are free from any obstruction, like a bullet blocked inside the barrel due to defective or improper ammunition.

### 7. USE PROPER AMMUNITION.

Only use factory-loaded, new ammunition manufactured to industry specifications: CIP (Europe and elsewhere), SAAMI® (U.S.A.). Be certain that each round you use is in the proper caliber or gauge and type for the particular firearm.

The caliber or gauge of the firearm is clearly marked on the barrels of shotguns and on the slide or barrel of pistols.

The use of reloaded or remanufactured ammunition can increase the likelihood of excessive cartridge pressures, case-head ruptures or other defects in the ammunition that can cause damage to your firearm and injury to yourself or others nearby.

### 8. ALWAYS WEAR PROTECTIVE GLASSES AND EARPLUGS WHEN SHOOTING.

The chance that gas, gunpowder or metal fragments will blow back and injure a shooter who is firing a gun is rare, but the injury that can be sustained in such circumstances can be severe, including the possible loss of eyesight. A shooter must always wear impact resistant shooting glasses when firing any firearm. Earplugs or other high-quality hearing protectors help reduce the chance of hearing damage from shooting.



### 9. NEVER CLIMB A TREE, FENCE OR OBSTRUCTION WITH A LOADED FIREARM.

Open and empty the chamber of your firearm and engage the manual safety catch before climbing or descending a tree or before climbing a fence or jumping over a ditch or other obstruction. Never pull or push a loaded firearm toward yourself or another person. Always unload the firearm, visually and physically check to see that the magazine, loading mechanism and chamber are unloaded and that the bolt is open before handing the firearm to another person. Never take a firearm from another person unless it is unloaded, visually and physically checked to confirm it is unloaded, and the action is open.



### 10. AVOID ALCOHOLIC BEVERAGES OR JUDGMENT/ REFLEX IMPAIRING MEDICATION WHEN SHOOTING.

Do not drink and shoot. If you take medication that can impair motor reactions or judgment, do not handle a firearm while you are under the influence of the medication.



### 11. NEVER TRANSPORT A LOADED FIREARM.

Unload a firearm before putting it in a vehicle (chamber empty, magazine empty). Hunters and target shooters should load their firearm only at their destination, and only when they are ready to shoot. If you carry a firearm for self-pro-



tection, leaving the chamber unloaded can reduce the chance of an unintentional discharge.

### 12. LEAD WARNING.

Discharging firearms in poorly ventilated areas, cleaning firearms, or handling ammunition may result in exposure to lead and other substances known to cause birth defects, reproductive harm, and other serious physical injury. Have adequate ventilation at all times. Wash hands thoroughly after exposure.

**WARNING:** it is YOUR responsibility to know and abide by Federal, State and Local laws governing the sale, transportation and use of firearms in your area.

**WARNING:** this firearm has the capability of taking your life or the life of someone else! Always be extremely careful with your firearm. An accident is almost always the result of not following basic firearm safety rules.

### Especially for U.S. consumers:

For information about Firearm Safety Courses in your area, please visit the National Rifle Association's web site at [www.nra.org](http://www.nra.org).





## Introduction

Benelli Armi S.p.A. proudly presents the new ARGO-E line of semi-automatic rifles, that are the result of Benelli's Research and Development Centre's operational efficiency, added to Benelli's extensive technical experience and skilled constructional engineering.

The reduced number of components plus the extremely simplified and rational design provide highly reliable operational performances. The new rifles are practical to use and easy to strip and service, to the extent that they have every right be considered as being the most innovative, accurate, safe, fast and stylish weapons of their kind available now on the market.

## Operation

**Before beginning any operation on your rifle, always make sure that chamber and magazine have been completely emptied!**

(Carefully read loading and unloading instructions).

ARGO-E rifles are fitted with a prismatic magazine; their semi-automatic operation is based upon the patented **Benelli ARGO** (Auto Regulating Gas Operated) system, featuring a revolving bolt head built with three locking teeth that perfectly close the breech axially.

We can divide the weapon's operational system into 8 specific actions:

- firing** once the trigger is pulled the hammer is set off and the impact with the firing pin fires up the cartridge in the chamber. The gasses that are given off by the reaction shoot the shell out of the barrel and simultaneously expand into the gas collector cylinder, thus causing immediate retraction on behalf of the piston with subsequent bolt retraction. This consequently leads to the
- clearing** of the chamber, which is opened and made ready for subsequent
- extraction** which entails removal of the cartridge case from the chamber, and

**ejection** whereby the cartridge case is definitely ejected out of the rifle. In the final phases of the out motion the mechanism gets ready for

**reloading** which in synthesis can also be considered as being "energy storage" for the next shot. Separate devices simultaneously provide

**introduction** which entails automatic exit of a new cartridge from the magazine and subsequent

**positioning** of the cartridge into the firing chamber, followed by

**clamping** i.e. air-tight sealing of the chamber.

The rifle is now ready to shoot.



## Assembly (from packaged rifle)

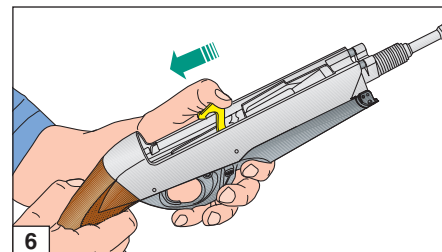
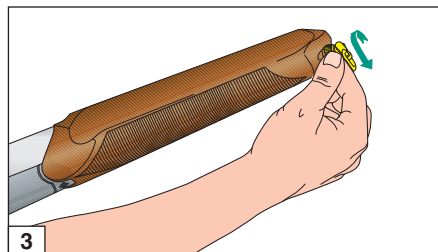
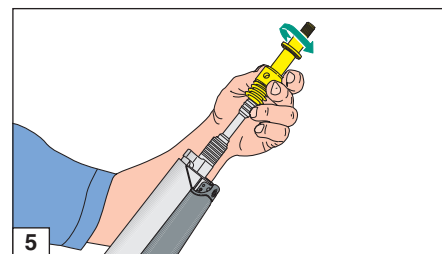
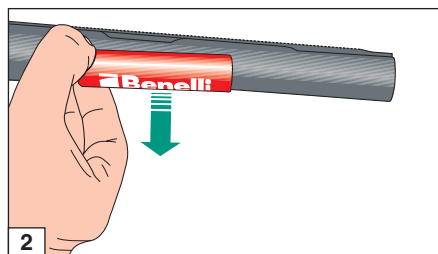
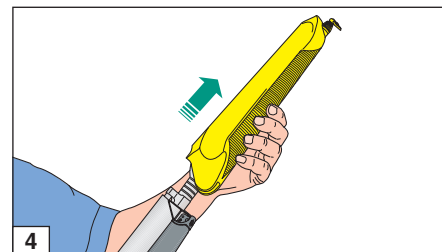
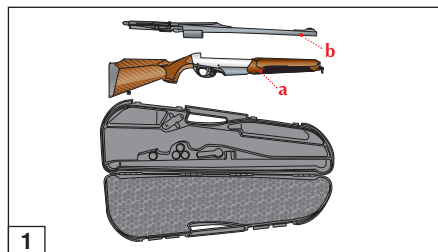
Pieces contained in the package (fig. 1):

- a) **stock-receiver-fore-end** unit
- b) **barrel-bolt** unit

**WARNING:** please remember to remove the **plastic barrel sheath** before using the rifle (fig. 2).

## Assembly procedure

- 1) Unscrew the **fore-end cap** on the **stock-receiver-fore-end** unit (fig. 3).
- 2) Slide the **fore-end** out (fig. 4).
- 3) Hold the **stock-receiver-fore-end** unit with one hand and with the other, unscrew the **barrel locking cap** (fig. 5).
- 4) Make sure **hammer** is cocked and if not, do so (fig. 6).





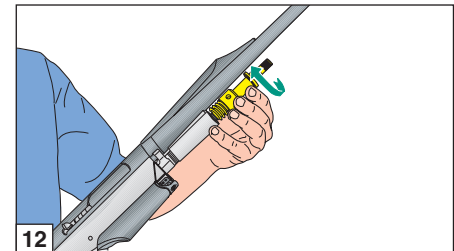
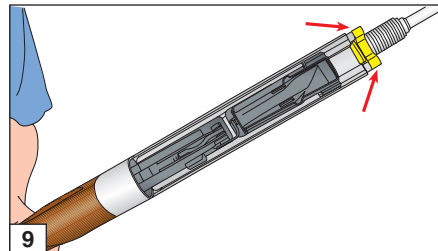
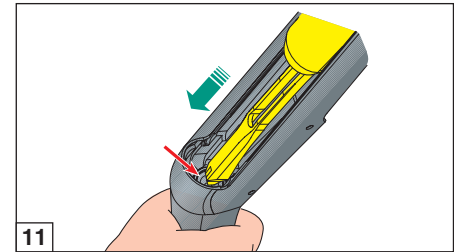
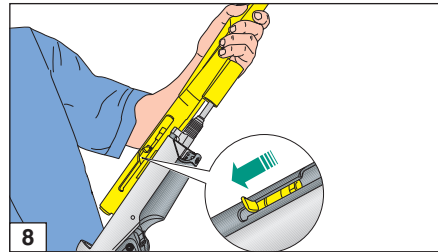
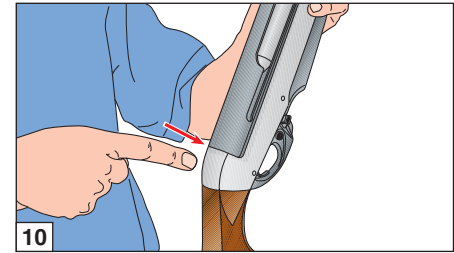
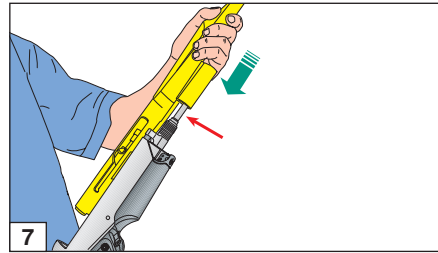
- 5) Hold the **stock-receiver** unit with one hand and the **barrel-bolt** unit with the other. Slide the **gas collector cylinder** onto the cylinder guide pin (fig. 7) at the same time **sliding the bolt backwards** (fig. 8).

**NOTE:** the **fins** on the **gas collector cylinder** must be lined up with the relative pins (fig. 9).

- 6) Lodge the end part of the cover into the receiver and push all the way in until the whole unit clicks into place at stroke-end, and fits snugly (fig. 10).

**WARNING:** as the **bolt link** passes over the trigger guard it must fit itself into the **recoil spring tube** inside the receiver (fig. 11).

- 7) Fit the **barrel locking cap** to the end of the cylinder guide pin (fig. 12) and screw it on fully, using the **sling swivel pin** of the fore-end assembly (fig. 13).



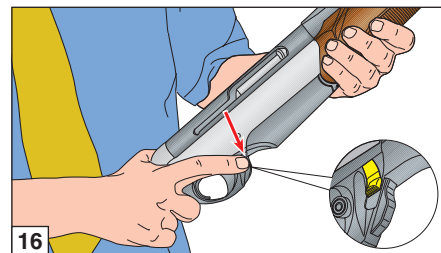
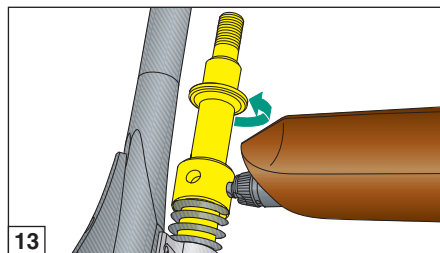




**WARNING:** use enough force when screwing on the cap to overcome the contrast of the spring stopping the barrel, until the cap is fully against the cylinder guide pin.

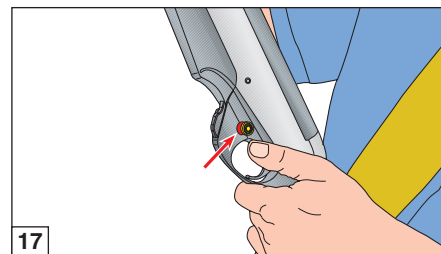
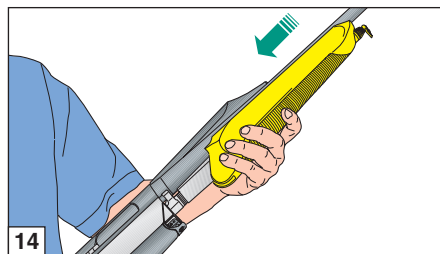
- 8) Slide **the fore-end** back on (fig. 14) and screw the **fore-end cap** back in (fig. 15).
- 9) Close **the bolt** by pulling it back and pressing the **no load lever** (fig. 16).

You have now finished assembling your rifle.



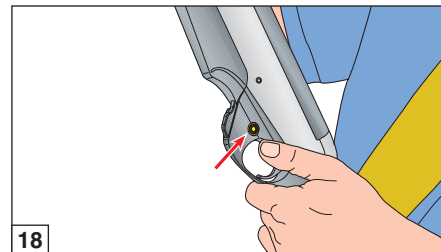
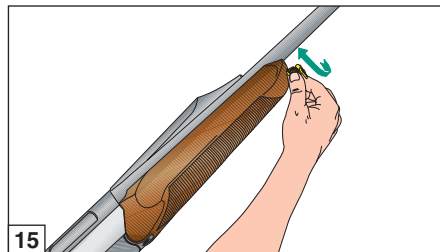
## Use

**Before beginning any operation on your rifle, always make sure that chamber and magazine have been completely emptied!**  
(Carefully read loading and unloading instructions).



## Rifle safety catch

Press the **safety button** on the trigger guard until its **red ring**, indicating firing position, is **no longer visible** (figs. 17-18).





## Loading

Before beginning any operation on your rifle, always make sure that chamber and magazine have been completely emptied!

(Carefully read loading and unloading instructions).

**NOTE:** make sure that your firearm is fitted with a magazine containing a number of cartridges permitted by legislation in the country where you intend to use it.

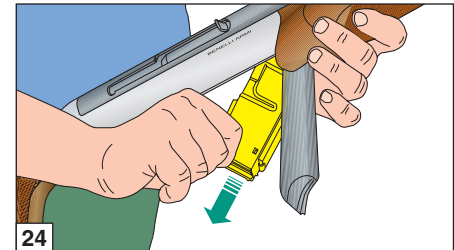
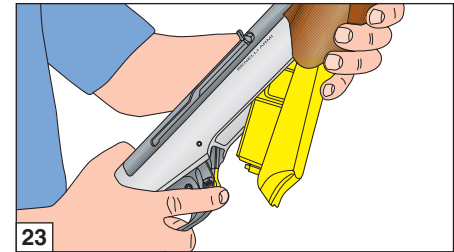
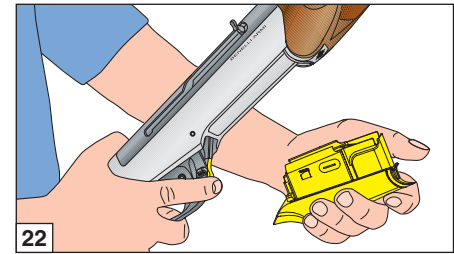
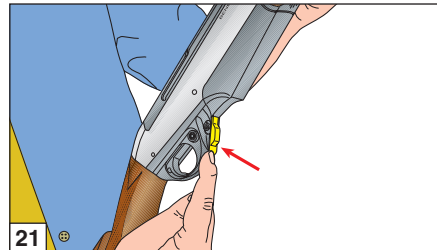
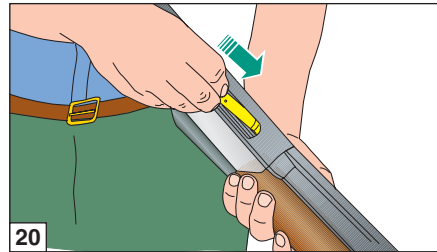
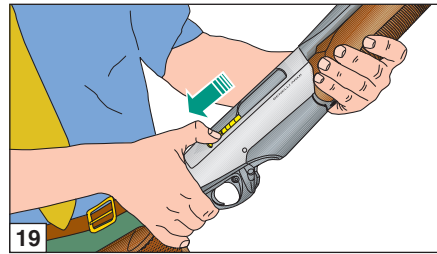
## Loading procedure

**NOTE:** the rifle's **safety catch** must be engaged (see previous "Rifle safety catch" point) and the **hammer cocked**. Take care to point the barrel in a safe direction.

- 1) **Open the bolt** (fig. 19).
- 2) Place a **cartridge** into the chamber (fig. 20).
- 3) Close **the bolt** by pulling it back and pressing the **no load lever** (fig. 16).

**NOTE:** the rifle is now loaded. If you want to fire off only one shot, you only need to press the safety catch into firing position (the red ring must be visible) and it is ready for firing.

- 4) In order to load the rifle completely, with the bolt closed, **release magazine** by pressing in the **release latch** (figs. 21-22-23-24). Should local regulations allow for it, the rifle can feature a removable magazine.



**NOTE:** in the **removable prismatic magazine** version, the magazine is automatically ejected by the rifle. Catch the magazine before it is released in order to avoid it falling.

- 5) Place **the cartridges** into the magazine (figs. 25-26-27).
- 6) **Close the magazine** back up, making sure it is firmly connected (figs. 28-29).

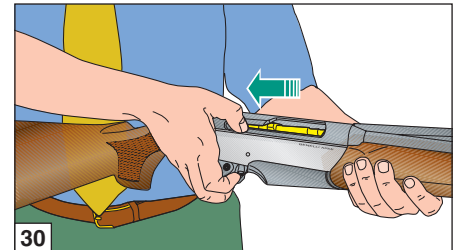
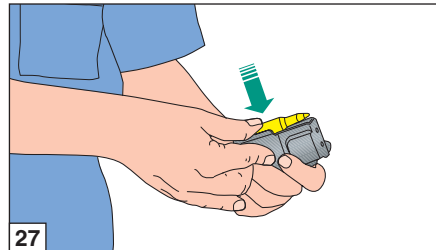
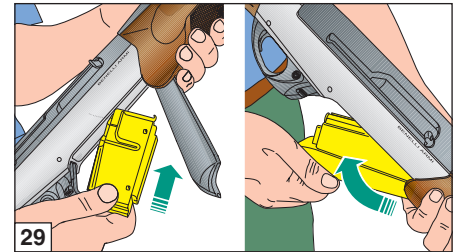
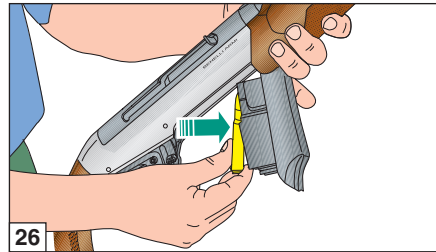
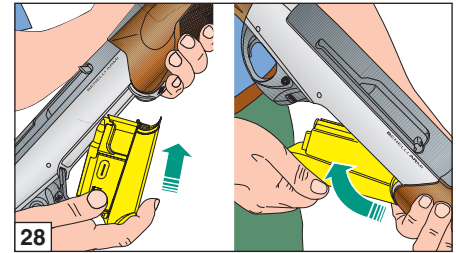
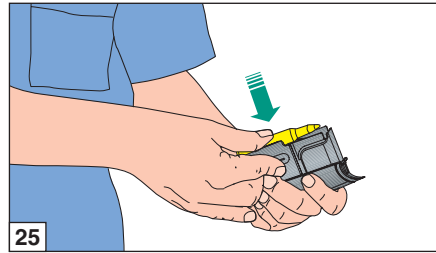
You have now **loaded the rifle**. Move the safety catch into firing position (**red ring is visible**) and you are ready to shoot.

### Unloading procedure

(The following steps must be carried out with the safety catch engaged - see previous "Rifle safety catch" point and care must be taken to point the barrel in a safe direction).

Proceed as follows to unload rifle:

- 1) Unclamp **the magazine** (figs. 21-22-23-24).
- 2) Open **the bolt** (fig. 30): the cartridge in the chamber shall be extracted and ejected.





- 3) Carefully release **cocking lever** and close **the bolt** (fig. 31).
- 4) Remove **the cartridges** from the magazine (fig. 32) by pushing them forwards and fit the empty magazine back in.

### Stripping of the rifle

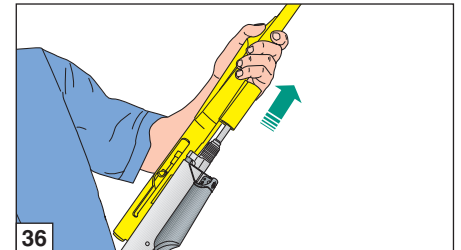
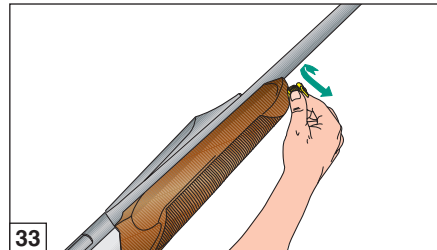
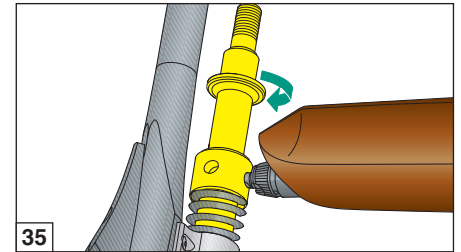
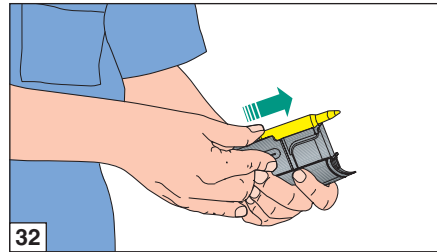
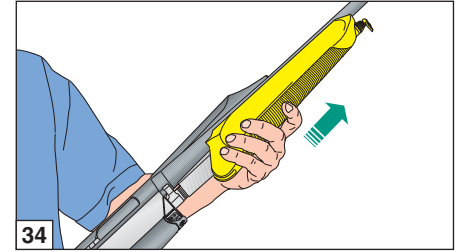
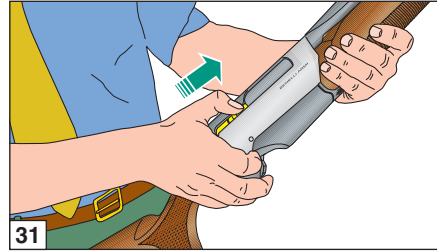
(for maintenance and cleaning)

**Before beginning any operation on your rifle, always make sure that chamber and magazine have been completely emptied!**

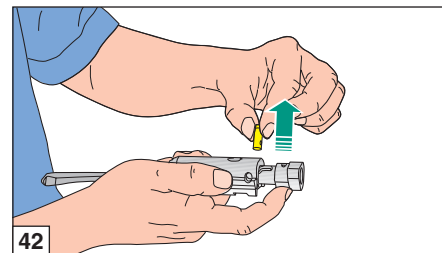
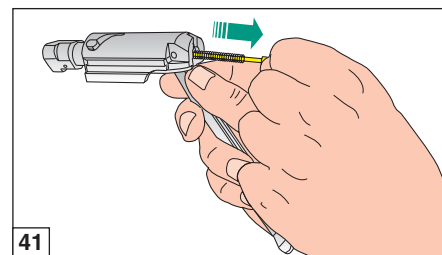
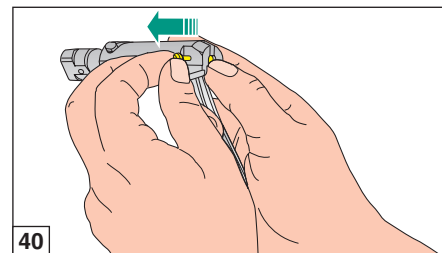
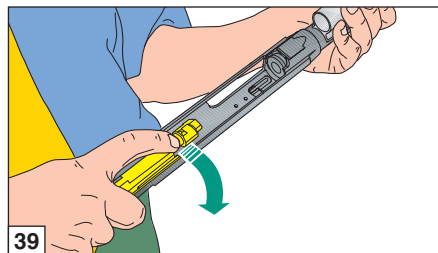
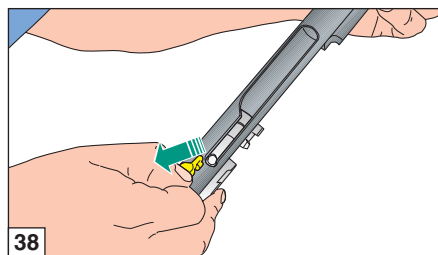
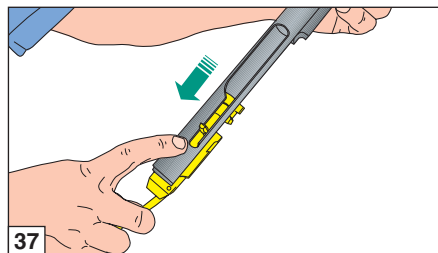
(Carefully read loading and unloading instructions).

### Stripping procedure

- 1) Open **the bolt** (fig. 19).
- 2) Unscrew **fore-end cap** completely (fig. 33) and slide off the **fore-end** (fig. 34).
- 3) Fully unscrew **the barrel locking cap** (fig. 35), using **the sling-swivel pin** of the assembly, if necessary.
- 4) Close **the bolt** back up by pressing in the bolt lever (fig. 16) and **remove the barrel-assembly** (fig. 36).



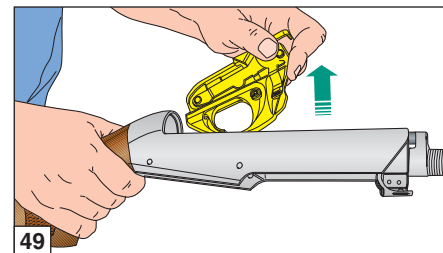
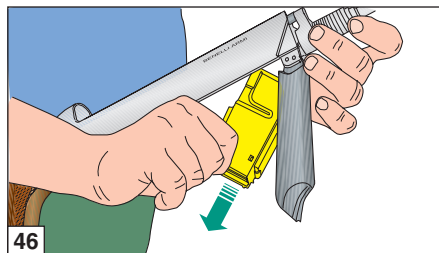
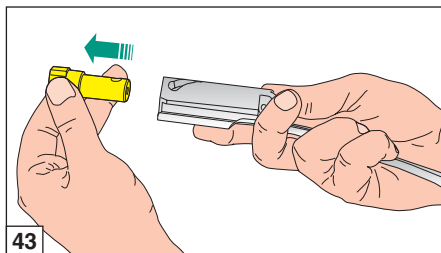
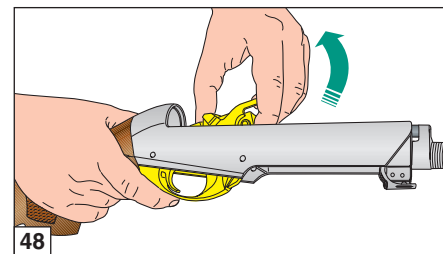
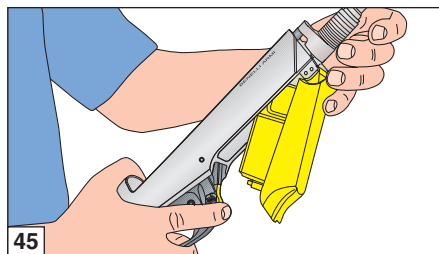
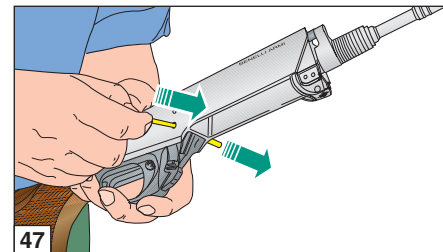
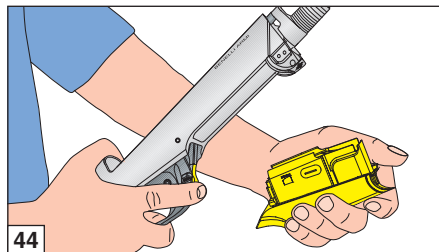
- 5) Take **the bolt** up to stroke end (fig. 37) and tear off **the arming bolt** (fig. 38).
- 6) Extend locking head and rotate and remove **bolt** (fig. 39).
- 7) Slide out the firing pin **retaining pin** whilst **keeping the firing pin** and firing pin **spring** in place (fig. 40).
- 8) Remove **firing pin** together with relative **spring** from the bolt (fig. 41).
- 9) Remove the locking head rotating **pin** from its seat (fig. 42).





- 10) Slide bolt **locking head** from the bolt (fig. 43).
- 11) Disengage **the magazine** (fig. 44-45-46).
- 12) Remove the **trigger guard pin** bushes from the stock-receiver unit (fig. 47).
- 13) Remove the **trigger guard group** by rotating it upwards (figs. 48-49).

The rifle is now completely stripped and all the parts that may require careful checking and cleaning are all disassembled.



## Maintenance

**Before beginning any operation on your rifle, always make sure that chamber and magazine have been completely emptied!**

(Carefully read loading and unloading instructions).

Thanks to its extremely simple design and accurately chosen materials, the ARGO-E rifles **do not require** special maintenance.

We nevertheless **recommend** the following:

- 1) routine **cleaning of the barrel** after use;
- 2) periodically clean and lubricate the firing mechanism (hammer, trigger and magazine) to avoid clogging with **powder residuals** (or other foreign matter);
- 3) **the bolt group** also risks clogging for the same reasons and therefore must also be dismantled, cleaned and lubricated;
- 4) periodically clean the piston and the gas collector cylinder;
- 5) to keep the rifle in good order we recommend lubrication of any of the **parts subject** to atmospheric corrosion.

For a proper maintenance of your firearm, **use Benelli cleaning kit** (*not supplied*) and **oil Benelli** (fig. 50).

**Benelli oil is recommended** for lubricating and protecting mechanical parts (receiver, bolt and barrel) (fig. 50).

Benelli recommends use of specific products for cleaning other parts (wooden, technopolymer and camouflage or painted stock and fore-end). Avoid that parts get in contact **with oils containing solvents or chemical substances in general, which could alter or damage their surfaces.**

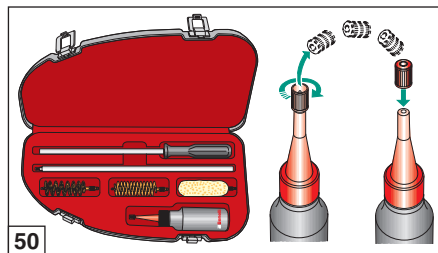
**N.B.:** valve and piston do not require lubrication.

The gas collector cylinder is fixed onto the barrel by means of eight locking screws that are sealed with a special varnish (fig. 51).

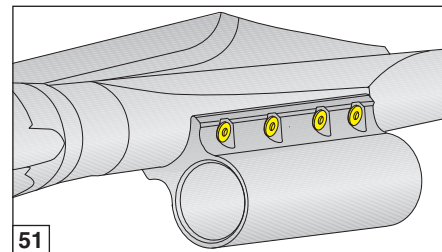
**WARNING:** improper use or dismantling of these screws on behalf of the user, automatically leads to cancellation of each and every warranty right.

**Cleaning the gas collection system**  
(figs. 52-53)

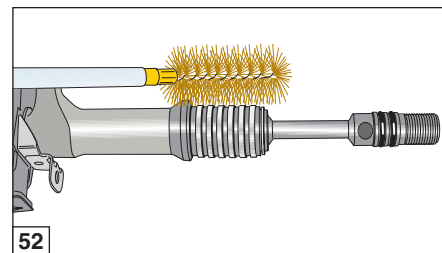
**WARNING:** some ammunition uses powders with a specific make-up that tends to create significant deposits of combustion residues inside the gas collector.



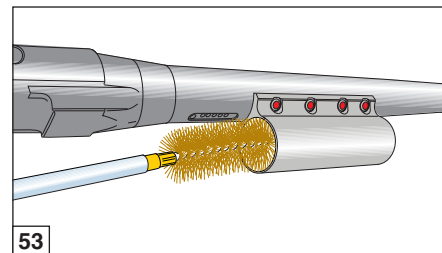
50



51



52



53





The ARGO-E gas collector is located back in the barrel, thereby facilitating the automatic cleaning of combustion residues after each firing cycle.

These residues may, in any case, become denser, particularly after a long period in which the weapon has not been used, with the consequent risk of piston blockage.

Where the weapon is not used for a long time, and in any case at the end of the hunting season, please clean the gas collector as follows:

- 1) Dismantle the barrel and piston (see stripping procedure on page 10).
- 2) Carefully clean the piston, the piston guide, the elastic bands and the inside of the cylinder with a bronze cleaning rod.
- 3) Check that the piston slides freely and that the holding elastic bands are free to oscillate on the piston.

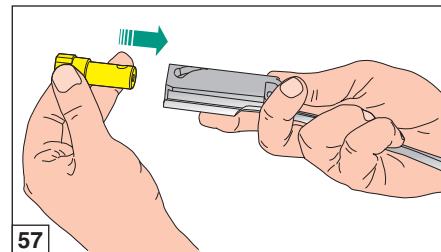
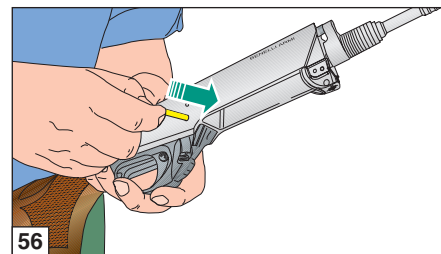
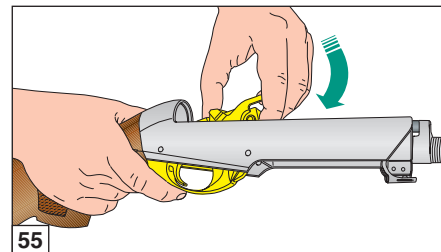
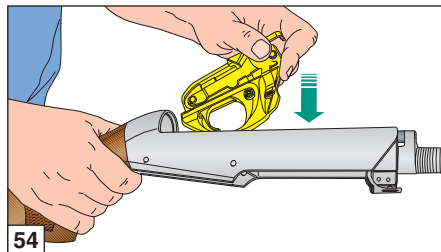
**WARNING:** do not lubricate the piston and the inside of the cylinder. Oil can lead to the accumulation of combustion residues.

For any servicing whatsoever, please contact the nearest Benelli Technical Assistance Center.

## Rifle assembly

For correct assembly of the rifle after maintenance, proceed as follows:

- 1) Fit the whole **trigger unit, with cocked hammer**, onto the receiver; position it so that it is the front end that **comes into contact** with the receiver (figs. 54-55).
- 2) Push in the trigger guard **pin bush** (fig. 56).
- 3) Slide the **locking head** into the bolt making sure that the hole on the stem coincides with the bolt **slot** (fig. 57).





- 4) Fit the locking head **pin** into its hole on the locking head stem through the slot on the bolt (fig. 58).
- 5) Fit the **firing pin** and the firing pin spring into the slot on the bolt (fig. 59).

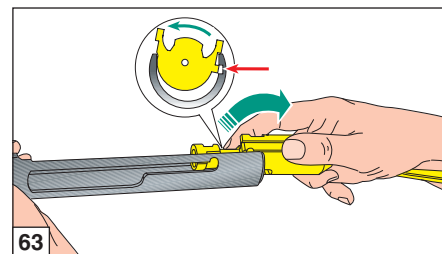
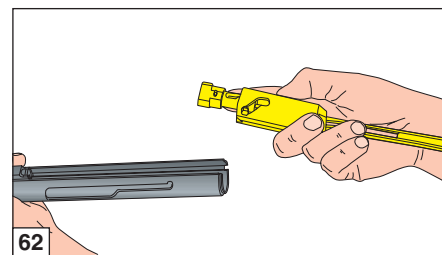
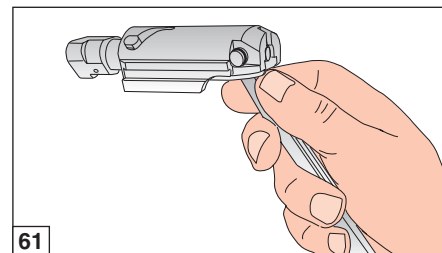
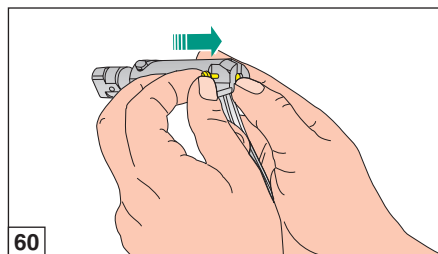
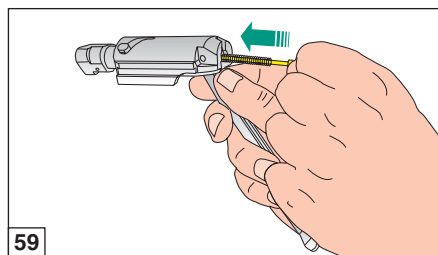
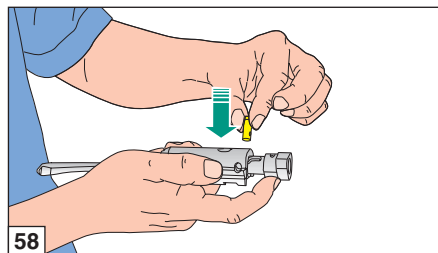
**NOTE:** always double check to make sure that the firing pin spring is in place.

- 6) Assemble the firing pin **retaining pin** into its slot so that the firing pin is locked into place (fig. 60).

**WARNING:** if both **firing pin** and relative **locking pin** have been assembled correctly, the firing pin must appear **as shown** in figure 61.

**NOTE:** **do not** use any type of **tool** for the insertion of the firing pin into the bolt carrier: **only use your fingers!**

- 7) Grip **the bolt**, making sure that you **keep the head's** position extended (fig. 62).





- 8) Place **the bolt** into position as illustrated (fig. 63) and **slide it forward** until the bolt lever seat is aligned with the end of the slot (fig. 64); push **the bolt lever** into its hole (fig. 65).
- 9) **To finish** rifle assembly, follow all the steps given after step 3 at page 5.

## Troubleshooting

**Before beginning any operation on your rifle, always make sure that chamber and magazine have been completely emptied!** (Carefully read loading and unloading instructions).

### If the rifle fails to fire

- 1) **Check the safety catch:** if it is engaged, push the button into firing position.
- 2) **Check that there is a cartridge in the barrel:** if not, insert a cartridge as per loading instructions (page 8).
- 3) **Check firing mechanism:** if necessary, clean and lubricate.
- 4) **Check the gas system:** the piston must freely move inside the cylinder. If necessary proceed with cleaning, (page 13).

### Barrel locking cap

**Especially after having fired the first shots,** make sure that the barrel locking cap is tightly screwed onto the receiver, so that **the barrel is completely locked on.**

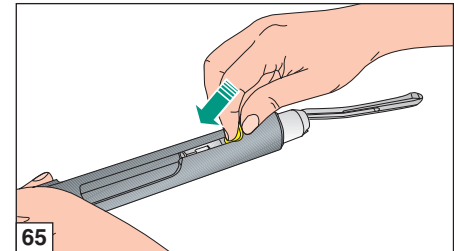
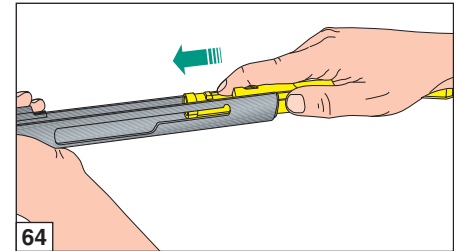
## Choice of ammunition

All cartridges having a calibre that equals the calibre given on the rifle barrel may be used for your ARGO-E, provided they **conform to CIP regulations.**

**Non-compliance to this rule would have serious consequences both for the shooter and for the rifle.**

**NOTE:** use of not correctly refilled cartridges may cause damages to both the barrel and the lock, with possible consequences for the shooter as well.

**All the ARGO-E rifles are subjected to a burst test at the Italian National Proof House in Gardone Valtrompia (Brescia), conform to CIP regulations.**



## ACCESSORIES AND ADJUSTMENTS

### Drop change

(wood stock and Progressive Comfort stock)

Before beginning any operation on your rifle, always make sure that chamber and magazine have been completely emptied!

(Carefully read loading and unloading instructions).

DROP CHANGE SCHEDULE			
Cast shim (plastic)	Stock locking plate (steel)	Drop shim (plastic)	Drop value at heel (mm)
Reference letter	Reference letter	Reference letter	
DX	Z DX	Z	45 ± 1 DX
SX	Z SX		45 ± 1 SX
DX	A DX	A	50 ± 1 DX
SX	A SX		50 ± 1 SX
DX	B DX	B	55 ± 1 DX
SX	B SX		55 ± 1 SX
DX	C DX	C	60 ± 1 DX
SX	C SX		60 ± 1 SX
DX	D DX	D	65 ± 1 DX
SX	D SX		65 ± 1 SX

**Matching instructions:** the drop change shims and stock locking plates in the kit are identified by letters. To ensure a correct drop, **always** use plates and shims with the same letter, e.g.: C - CDX – for a 60-RH drop or C - CSX – for a 60-LH drop.

DX = Right hand  
SX = Left hand

The rifle is supplied with a “drop change kit” (fig. 66A wood stock - fig. 66B Progressive Comfort stock - fig. 67 synthetic stock) which enables you to adjust the original drop the rifle is supplied with. The kit consists of **stock locking plates** (in steel) and **drop change shims** (in plastic).

The kit enables you to obtain different drop patterns (as specified in the table) and two different deflections (right hand or left hand).

Each unit is marked with the corresponding drop and cast letter.

Determine if your stock drop fits you perfectly, or whether it is either too high or too low.

If it is too low, you need to select the previous adjustment set in alphabetical order (e.g. if the shim supplied on the rifle is marked with a “C”, you must select the “B”, together with the corresponding stock locking plate).

Proceed as follows to change shims:

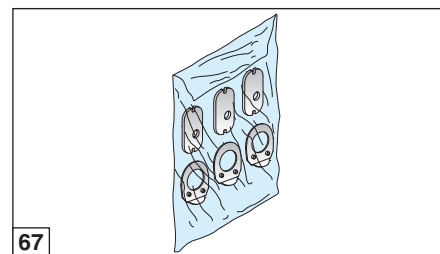
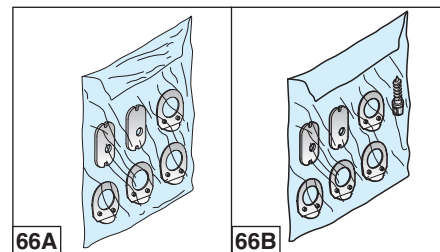
**Wood stock** (fig. 68)

**Progressive Comfort stock** (fig. 69)

- 1) Unscrew **the two fixing screws** and remove **the butt plate “1”** (using a cross-head screwdriver).

**WARNING:** to avoid damaging the butt plates, apply a light coat of vaseline or grease to the shaft of the screwdriver.

- 2) (*Progressive Comfort stock only*) **unscrew the two fixing screws** using a Phillips screwdriver and remove the **comfort kit “2”** from the stock.



- 3) Unscrew **the stock retaining nut “3”** (using a 13 mm hexagon wrench).
- 4) Remove the **nut “3”**, from the recoil spring tube and remove the **rubber washer “4”**, **stock locking plate “5”**, **stock “6”**, **cast shim “7”** and **drop shim “8”**.

**WARNING:** (*Progressive Comfort stock only*) **if the stock spacer “9”** doesn't remain inside the stock, reassemble it with the seat of **plate “5”** facing the butt plate.

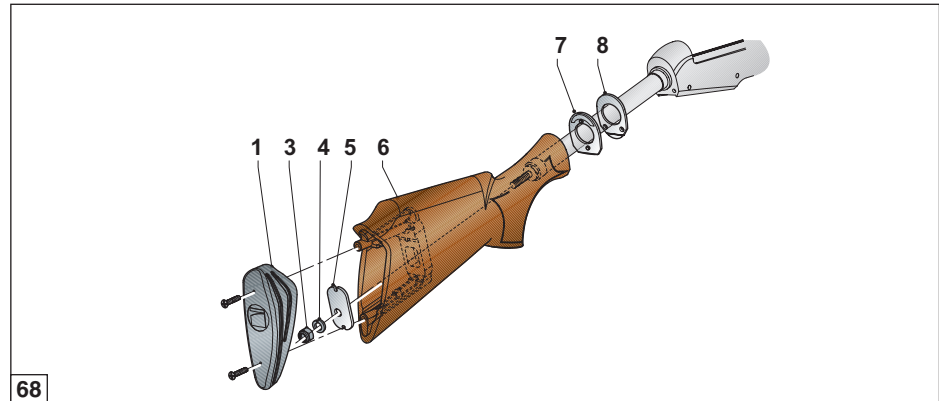




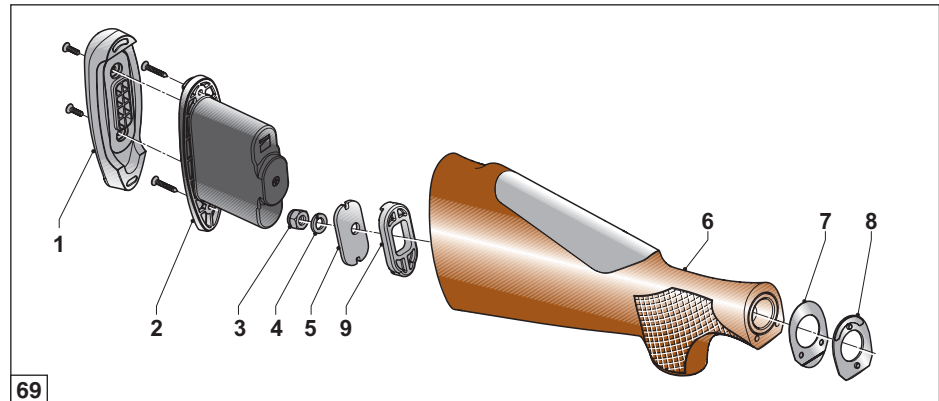
- 5) Assemble the **drop shim "8"** that you have selected onto the recoil spring tube with the **stamped letter** facing the stock.
- 6) Reassemble the selected **cast shim "7"** with the stamped letter (DX or SX) facing toward the stock.
- 7) Point the barrel towards the floor and fit the **stock**. Engage the **stock locking plate "5"** in the stock with the side punched with the chosen letter facing the butt plate.
- 8) Fit the **rubber washer "4"** then screw the **nut "3"** on to the end of the recoil spring tube. **Tighten the nut securely.**
- 9) (*Progressive Comfort stock only*) fit the **comfort kit "2"** inside the stock and secure it with its **two screws** using a Phillips screwdriver.
- 10) Fit the **butt plate "1"** and secure it with its **two screws** using a Phillips screwdriver.

Having altered the stock drop of your rifle, you have also obviously altered the firing position as well: it is therefore **necessary** that you first practice by executing some shots in order to make sure that the firing position is suitable to your size and shooting style.

**WARNING:** on completion of the drop change, check that the stock is securely fixed to the receiver. Check again after firing the first few rounds and, if necessary, re-tighten the nut with a suitable wrench to fix the stock securely in place.



68



69



## Drop change (synthetic stock)

DROP CHANGE SCHEDULE			
Cast shim (plastic)	Stock locking plate (steel)	Drop shim (plastic)	Drop value at heel (mm)
Reference letter	Reference letter	Reference letter	
DX	Z DX	A	$50 \pm 1$ DX
SX	Z SX		$50 \pm 1$ SX
DX	A DX	B	$55 \pm 1$ DX
SX	A SX		$55 \pm 1$ SX
DX	B DX	C	$60 \pm 1$ DX
SX	B SX		$60 \pm 1$ SX
DX	C DX	D	$65 \pm 1$ DX
SX	C SX		$65 \pm 1$ SX

**Matching instructions:** the drop change kits are identified by letters.

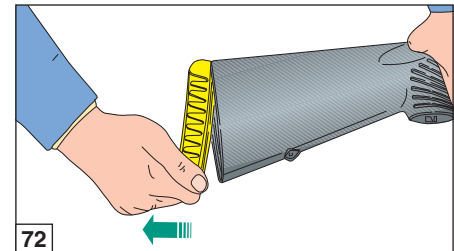
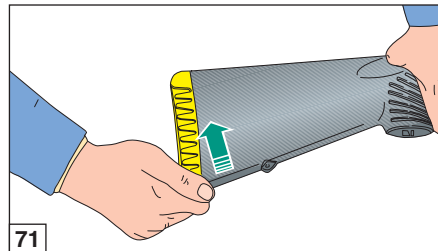
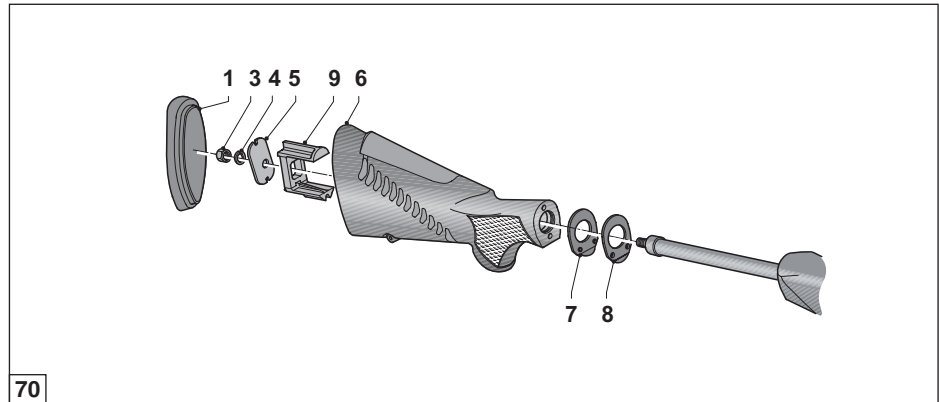
To ensure a correct drop **always** match locking plates and shims **that have the same letters**, e.g. **C - CDX - DX** or **C - CSX - SX**.

DX = Right hand  
SX = Left hand

Proceed as follows to change shims.

### Synthetic stock (fig. 70)

- 1) Press on the **butt plate "1"** and simultaneously make a movement from below upwards (figs. 71-72).
- 2) Follow the same operations (**from step 3 to step 8**) described in the section "**wood stock and Progressive Comfort stock**".





- 3) Refit the **stock spacer "9"** in the position shown (fig. 70).
- 4) As for reassembly, it is sufficient to press the **butt plate "1"** firmly against the stock until it enters its seating (fig. 73).

**WARNING:** always use **drop shims "8"**, **cast shims "7"** and **stock locking plates "5"** with the corresponding lettering, e.g. C - CDX - DX or C - CSX - SX. The use of component parts with different letters may cause permanent deformation of the recoil spring tube with as a result, bolt sliding problems.

**WARNING:** once stock has been replaced, make sure that it is correctly retained to the receiver. After having fired the first few rounds, repeat check and if necessary, fix the stock again by removing the butt plate again and tightening the nut again by using appropriate wrench.

Having altered the stock drop of your rifle, you have also obviously altered the firing position as well: it is therefore **necessary** that you first practice by executing some shots in order to make sure that the firing position is suitable to your size and shooting style.

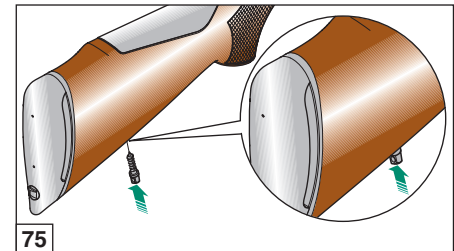
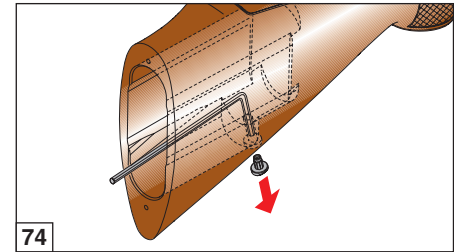
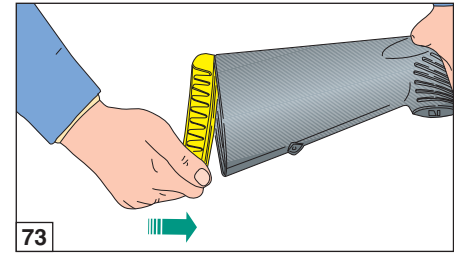
## Fitting the sling attachment pin to the stock

Rifles with Progressive Comfort stocks come with sling attachments. Proceed as follows to fit this to the stock.

- 1) **Unscrew the two fixing screws using a Phillips screwdriver** and remove the **butt plate "1"** (see fig. 69).

**WARNING:** smear the tip of the screwdriver with Vaseline or grease to avoid damaging the stock.

- 2) Using the same Phillips screwdriver, unscrew the two fixing screws and remove the **comfort kit "2"** from the stock (see fig. 69).
- 3) Use an Allen key to remove the **rubber plug** from the sling attachment hole inside the stock (fig. 74).
- 4) Using a 3 mm diameter punch as a tommy bar, screw the sling attachment pin into the hole in the stock. Tighten into firm contact with stock, until the hole in the pin lies perpendicular to the line of the stock (fig. 75).
- 5) Fit the **comfort kit "2"** and then the **butt plate** to the stock (see fig. 69).



## Removing and changing the comb (Progressive Comfort stock only)

Proceed as follows to remove and change the comb.

- 1) **Unscrew the two fixing screws using a Phillips screwdriver** and remove the **butt plate "1"** (see fig. 69).

**WARNING:** smear the tip of the screwdriver with Vaseline or grease to avoid damaging the stock.

- 2) Using the same Phillips screwdriver, unscrew the two fixing screws and remove the **comfort kit "2"** from the stock (see fig. 69).
- 3) Insert the tip of a screwdriver through the hole provided in the rear of the stock. Push the bottom of the comb upwards to release its back edge, then lift it and remove it from the stock (fig. 76).
- 4) To fit the new comb, position it so that the two dowels on its underside line up with the holes in the seat on the stock, then push the comb firmly down until it clicks into place (fig. 77).

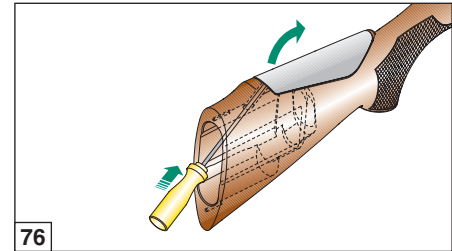
**WARNING:** the edges of the comb must mate perfectly with the profile of the stock when correctly fitted.

- 5) Fit the **comfort kit "2"** and then the **butt plate** to the stock (see fig. 69).

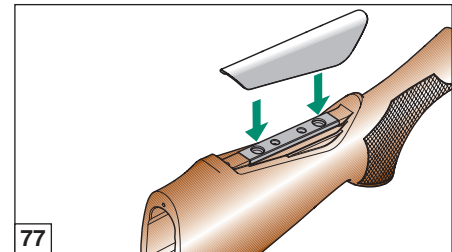
## Windage sight adjustment

Should standard factory setting not meet individual shooting requirements, sight adjustments can be carried out both laterally and vertically (see page 22).

**Before beginning any operation on your rifle, always make sure that chamber and magazine have been completely emptied!**  
(Carefully read loading and unloading instructions).



76



77



## Windage (lateral) sight adjustment

As for lateral adjustment of the back-sight, proceed as follows:

- 1) With the key you have been supplied with and keeping to the relative graduated alignment notches (fig. 78), adjust the back-sight position into the required direction (move it to the right if you want the point of impact to move right, or move it to the left if you want the point of impact to move left).

As for lateral adjustment of the front-sight, proceed as follows:

- 1) With the key you have been supplied with, turn out the lateral front-sight adjustment **screw** slightly (fig. 79).
- 2) Keeping to the relative graduated alignment notches, adjust the front-sight position into the required direction (move it left-wards if you want the point of impact to move right and right-wards if you want the point of impact to move left) and then re-set it by turning the adjustment screw back in.

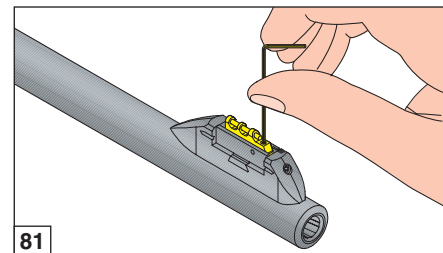
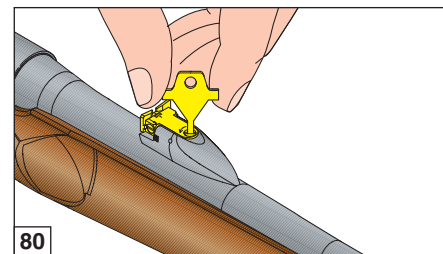
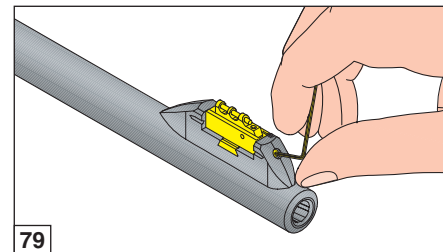
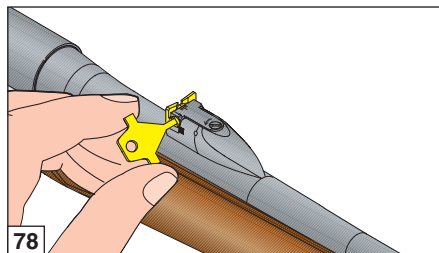
## Elevation sight adjustment

As for elevation back-sight adjustment, proceed as follows:

- 1) With the key you have been supplied with and keeping to the relative graduated alignment notches (fig. 80), adjust the back-sight position into the required direction (move it upwards if you want to raise the point of impact, or move downwards if you want the point of impact to be lower).

As for elevation front-sight adjustment, proceed as follows:

- 1) With the key you have been supplied with, adjust the front-sight position as required (move it downwards if you need to raise the point of impact or move it upwards if you need the point of impact to be lower) (fig. 81).





## Barrel replacement

**WARNING:** for markets where - by law - the magazine must be a fixed model, its replacement with one of a different gauge is not possible. However, in such cases it is not possible to replace the barrel with another one of different gauge.

### (A) - Excluding the barrels listed in paragraph (B), proceed as detailed below:

- 1) Disassemble the barrel to be replaced (see “Stripping procedure” on page 10, figures 33 to 36 and related instructions).
- 2) Assemble the new barrel equipped with special bolt (see “Assembly procedure” on pages 6-7, figures 7 to 15 and related instructions).

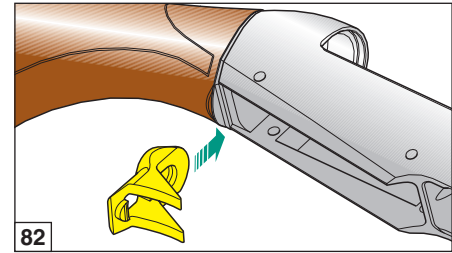
### (B) - Barrels with 308 Win gauge or 300/270 Win Short Magnum gauge

**WARNING:** these barrels require the assembly of a travel stop shim.

Proceed as detailed below.

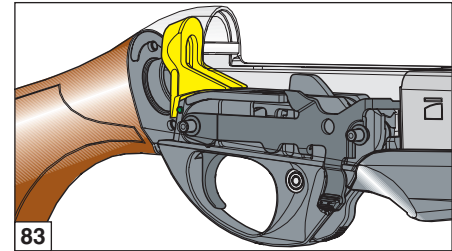
- 1) Disassemble the barrel to be replaced (see “Stripping procedure” on page 10, figures 33 to 36 and related instructions).
- 2) Disassemble the magazine from the receiver, or release it if it is a fixed rotating model (see “Stripping procedure” on page 12, figures 44 to 46 and related instructions).

- 3) Disassemble the trigger guard from the receiver (see “Stripping procedure” on page 12, figures 47 to 49 and related instructions).
- 4) Insert the **travel stop shim** from the bottom of the receiver, positioning it on the stop of the receiver inner side (figs. 82-83).
- 5) Assemble the trigger guard of the receiver so as it **locks** the shim in the proper position (see “Assembly procedure” on page 14, figures 54 to 56 and related instructions).



**WARNING:** the trigger guard must **lock** the shim in the proper position (fig. 83).

- 6) Assemble the magazine into the receiver or refasten it (if it is a fixed rotating model).
- 7) Assemble the new barrel equipped with special bolt (see “Assembly procedure” on pages 6-7, figures 7 to 15 and related instructions).



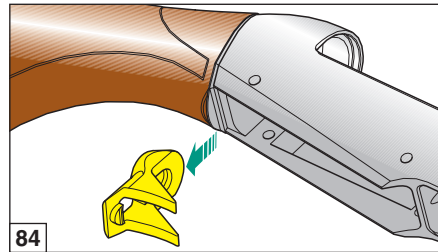


### (C) - Rifle with barrels listed in paragraph (B)

If the rifle is originally equipped with a barrel featuring 308 Win gauge - 300/270 Win Short Magnum gauge and if it is necessary to assemble another gauge available, the travel stop shim must be removed.

Proceed as detailed below.

- 1) Disassemble the barrel to be replaced (see **“Stripping procedure”** on page 10, figures **33 to 36** and related instructions).
- 2) Disassemble the magazine from the receiver, or release it if it is a fixed rotating model (see **“Stripping procedure”** on page 12, figures **44 to 46** and related instructions).
- 3) Disassemble the trigger guard from the receiver (see **“Stripping procedure”** on page 12, figures **47 to 49** and related instructions).
- 4) **Remove** the travel stop shim (fig. 84).
- 5) Assemble the trigger guard into the receiver (see **“Assembly procedure”** on page 14, figures **54 to 56** and related instructions).
- 6) Assemble the magazine into the receiver or refasten it (if it is a fixed rotating model).
- 7) Assemble the new barrel equipped with special bolt (see **“Assembly procedure”** on pages 6-7, figures **7 to 15** and related instructions).





## Spare Parts

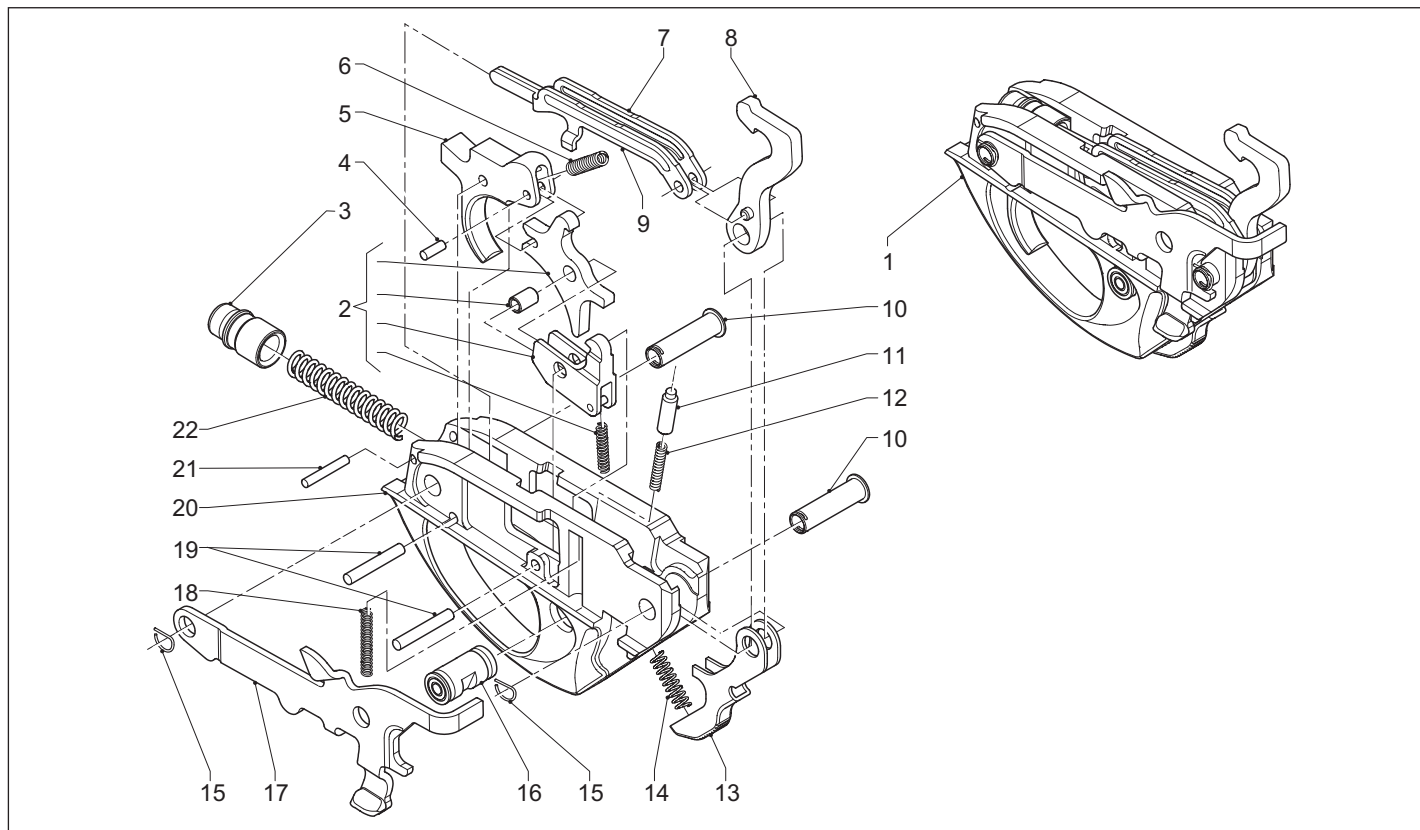


**To order spare parts you must specify the gauge, the model and the serial number of your shotgun.**

**Part numbers here listed refer to respective drawings.**



Drawing 1





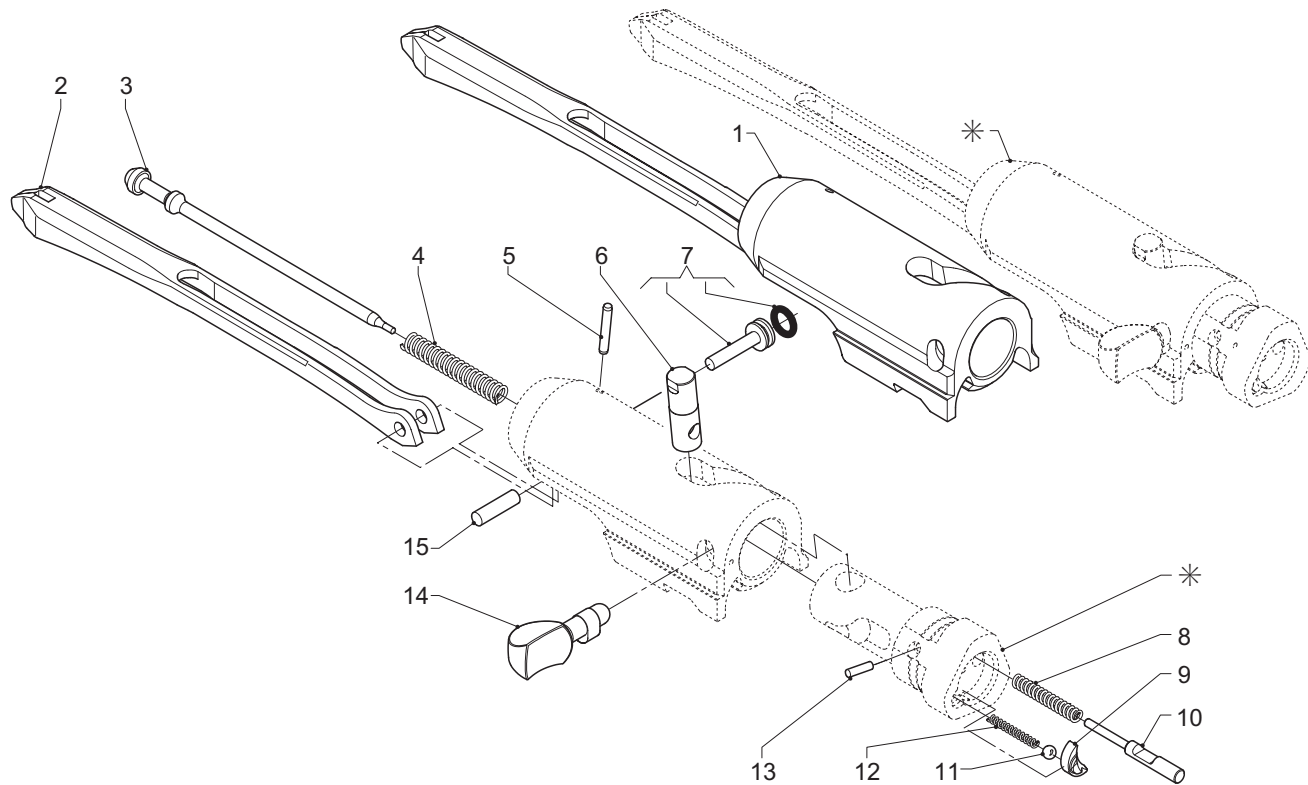
Pos. No.	Code	Description
1	001W	Trigger guard assy
2	443W	Disconnecter assy
3	003W	Cap
4	285W	Pin
5	009W	Trigger
6	011W	Spring
7	444W	Hammer link (L.H.)
8	002W	Hammer
9	281W	Hammer link (R.H.)
10	016W	Pin bush
11	008W	Pin
12	046J	Safety spring
13	282W	Magazine unlock lever
14	283W	Spring
15	018A	Spring
16	013W	Silenced safety button
17	219W	No-load indicator lever
18	220W	Spring
19	010W	Trigger pin
20	014W	Trigger guard
21	052P	Trigger pin
22	004W	Spring

Pos. No.	Code	Description





## Drawing 2





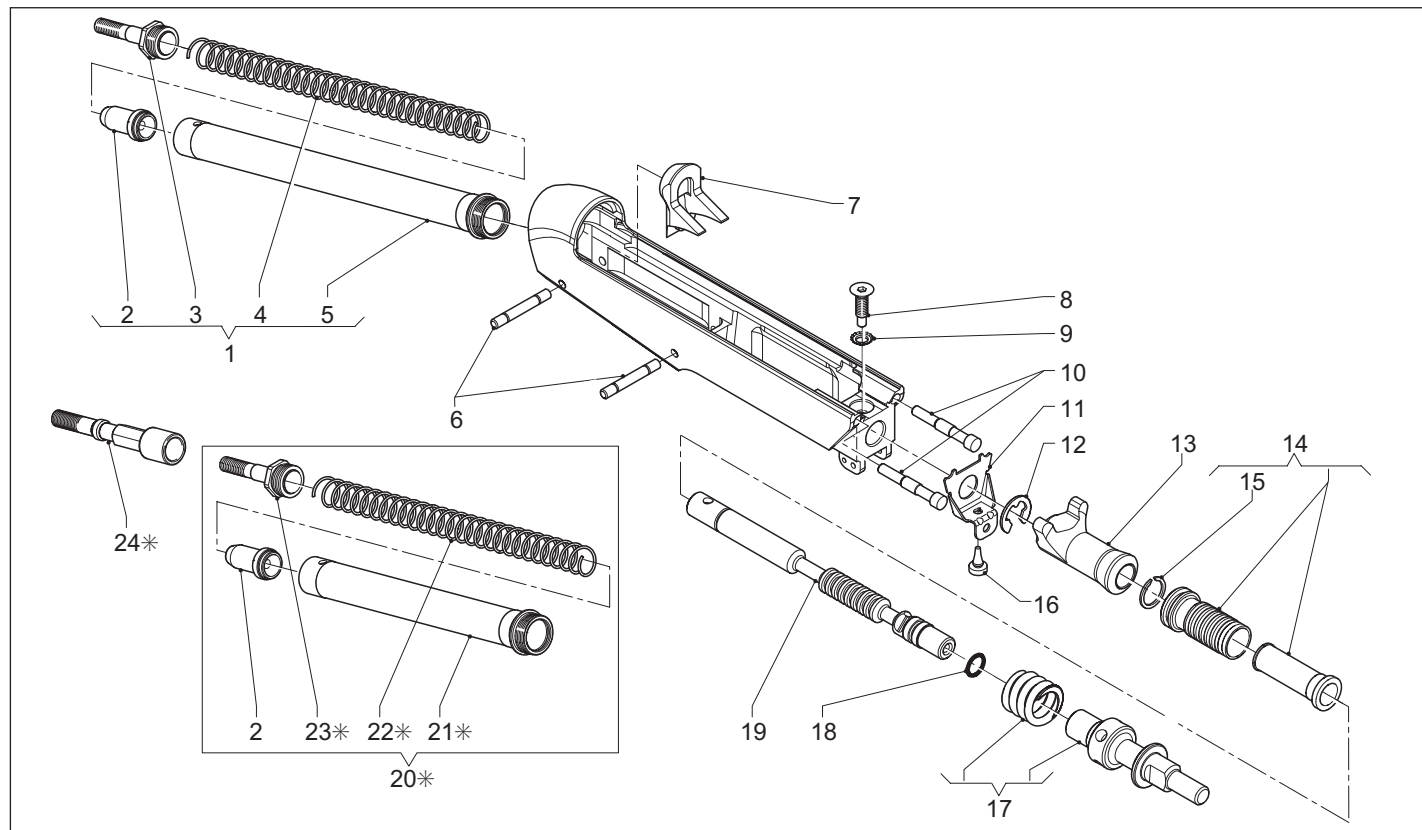
Pos. No.	Code	Description
1	287W	Bolt, partial
2	027W	Link
3	025W	Firing pin
4	037W	Spring
5	421W	Extractor pin
6	031W	Pin
7	028A	Firing pin retaining pin
8	046W	Ejector spring
9	034W	Extractor
10	045W	Ejector
11	074C	Extractor castor
12	033W	Spring
13	035A	Pin
14	030W	Bolt handle
15	029W	Link pin
*		Item not for sale separately from the barrel

Pos. No.	Code	Description
----------	------	-------------





Drawing 3







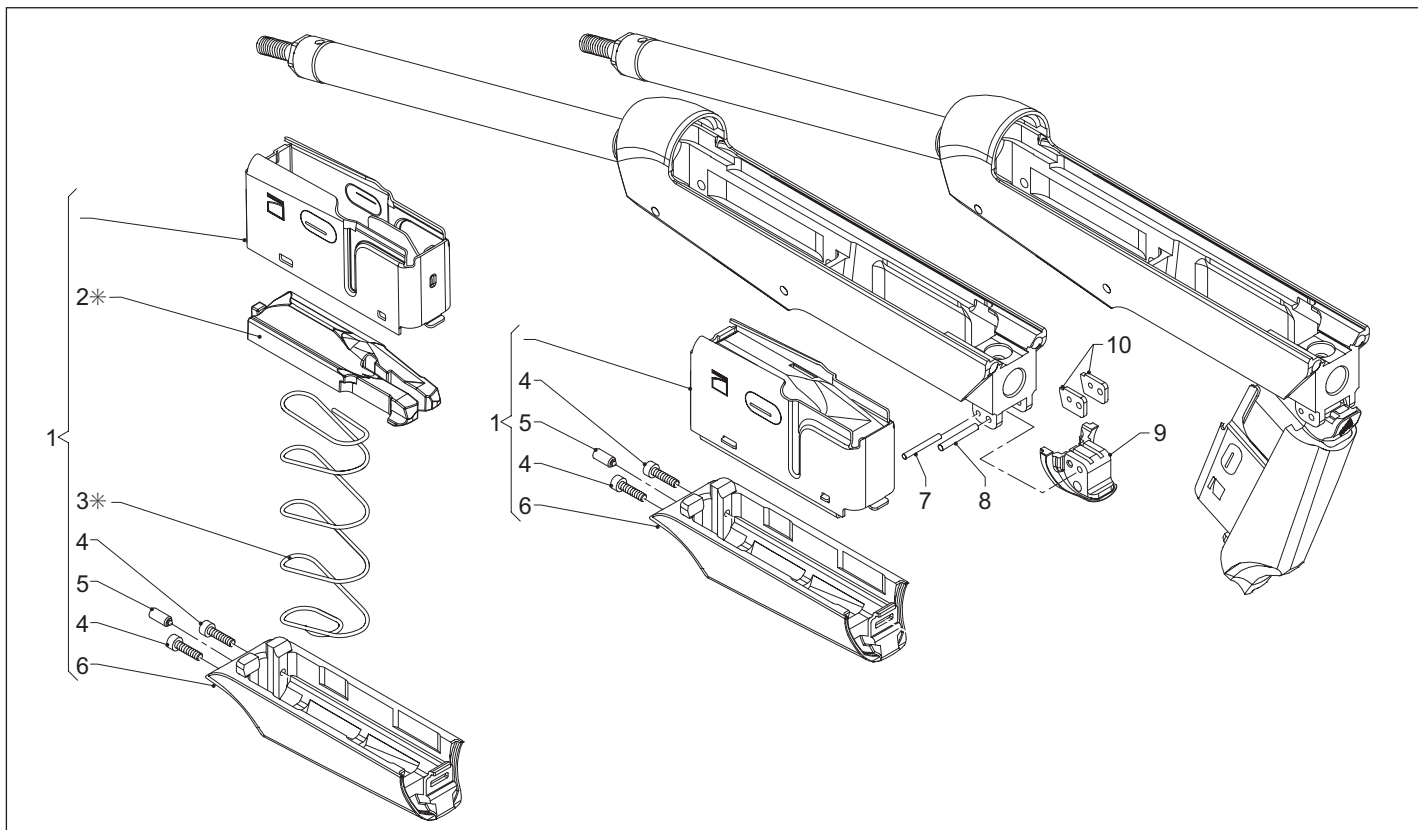
Pos. No.	Code	Description
1	166W	Recoil spring tube assy
2	055W	Pin
3	050U	Recoil spring tube plug
4	054W	Spring
5	049D	Recoil spring tube
6	015W	Pin
7	420W	Bolt travel stop (308 Win - 270 W.S.M. - 300 W.S.M.)
8	295W	Screw
9	296W	Conical-toothed washer
10	269W	Bolt follower pin
11	088W	Pin shoulder-plate
12	298W	Circlip
13	412V	Piston
14	399V	Piston extension assy
15	302W	Piston seeger
16	299W	Break-action magazine
17	069W	Barrel lock cap assy
18	270W	O-ring, cylinder plunger-pin
19	066W	Pin
20*	166W	Recoil spring tube assy
21*	K049	Recoil spring tube
22*	054W	Spring
23*	050B	Recoil spring tube plug

Pos. No.	Code	Description
24*	494W	Recoil spring tube extension
*		Argo-E Progressive Comfort only





Drawing 4

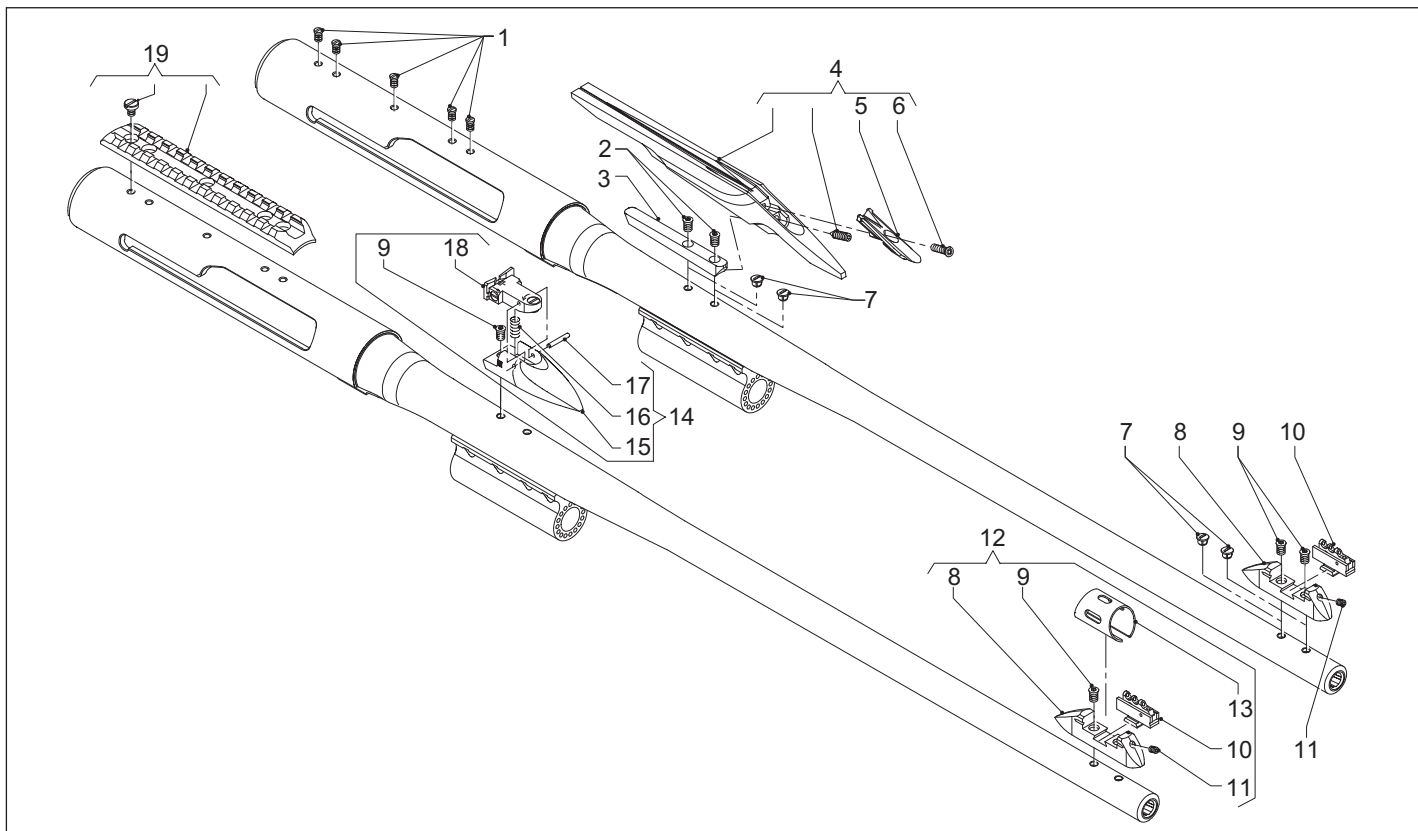




Pos. No.	Code	Description
1	307W	Prism magazine assy
2*	100W	Magazine follower
3*	480W	Magazine spring
4	310W	Screw
5	309W	Magazine presser
6	311W	Prism magazine carrier
7	010L	Pin
8	306W	Pin
9	305W	Prism magazine boss
10	304W	Magazine boss insert
*		Pieces saleable individually only for ga. 30.06 - 308 Win - 7 x 64 - 300 W.M.

Pos. No.	Code	Description
----------	------	-------------







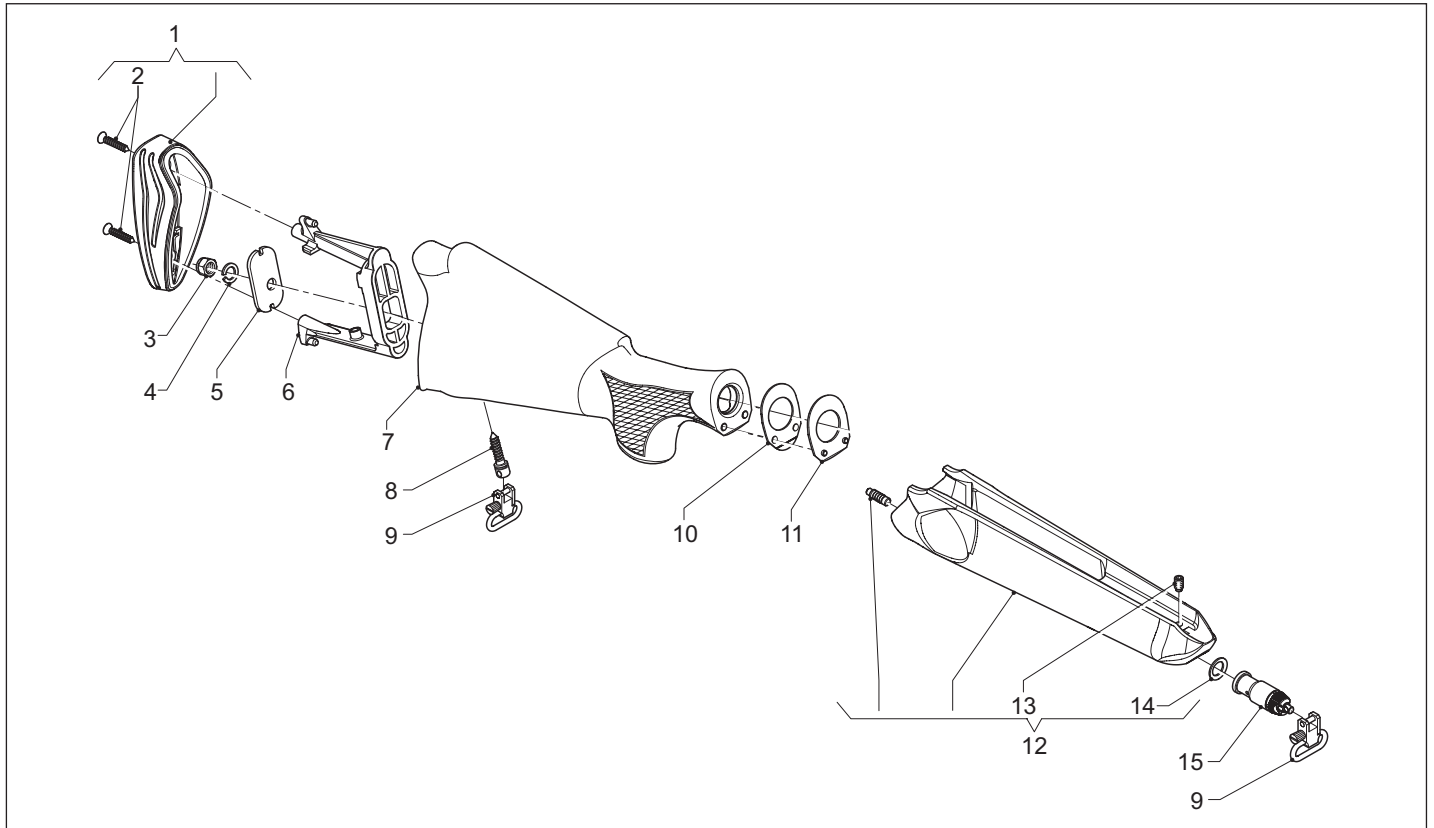
Pos. No.	Code	Description
1	294W	Cover plug w/threaded holes
2	398W	Torx screw
3	291W	Rib-fixing insert
4	293W	Rib barrel assy
5	469W	Rib fiber optic support
6	470W	Screw
7	423W	Barrel plug w/threaded holes
8	290W	Front-sight carrier
9	128W	Torx screw
10	110W	Adjustable front-sight assy
11	071A	Grub screw
12	297W	Complete front-sight assy
13	111W	Front-sight protection guard
14	127W	Rear sight assy
15	126W	Rear sight carrier
16	259N	Spring
17	035A	Retaining pin
18	127N	Rear sight
19	260W	Scope mount kit

Pos. No.	Code	Description
----------	------	-------------





Drawing 6A





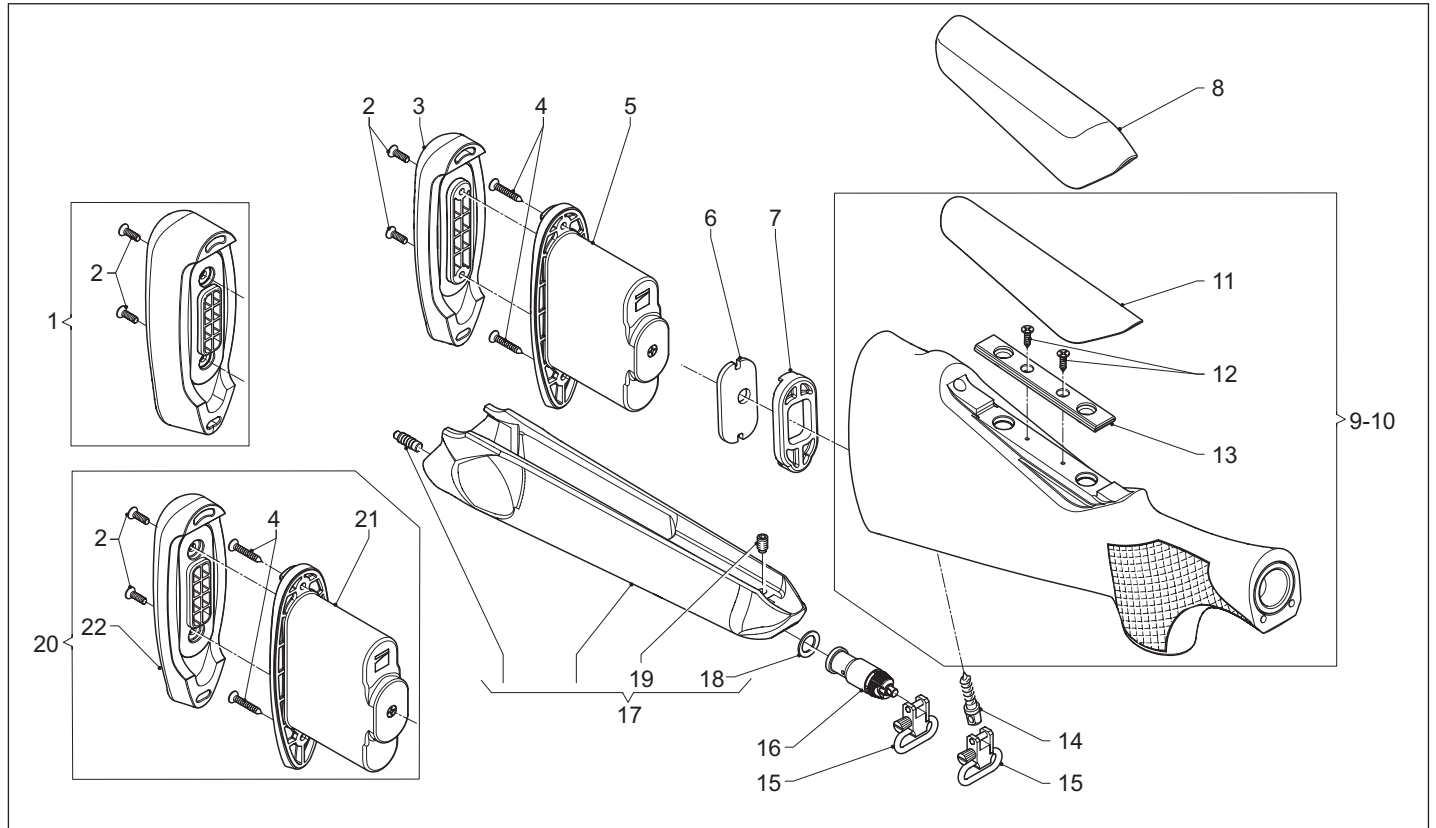
Pos. No.	Code	Description
1	151W	Rubber recoil pad kit assy
2	062L	Butt plate screw
3	053A	Nut
4	052A	Elastic washer
5	150W	Locking plate
6	149W	Stock spacer
7	176W	Montecarlo wood stock (without recoil pad)
7	181W	Pig-backed wood stock (without recoil pad)
8	152C	Screw
9	188L	Removable sling swivel
10	286W	Cast shim
11	147W	Drop shim
12	174W	Fore-end (wood) assy
13	224W	Fore-end grub screw
14	289W	Washer
15	146W	Fore-end follower

Pos. No.	Code	Description





Drawing 6B







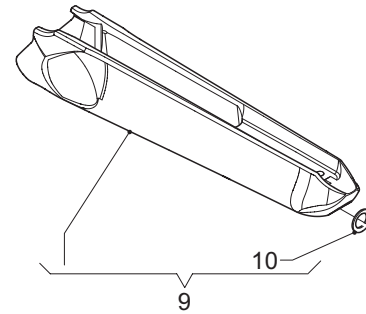
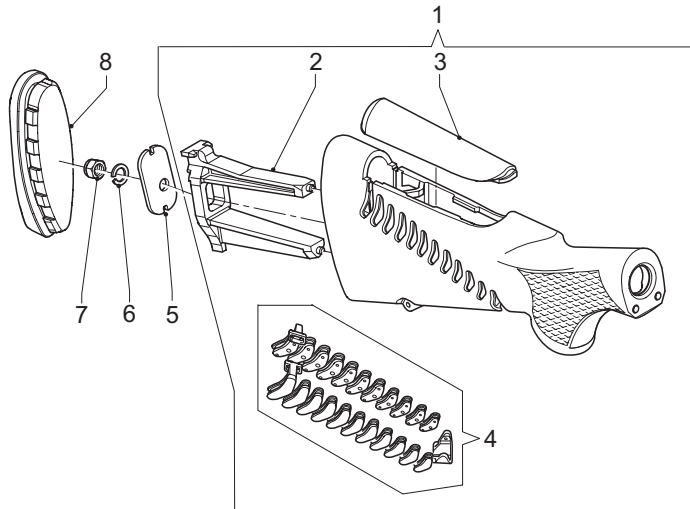
Pos. No.	Code	Description
1	203H	Recoil pad kit LOP 380 mm
2	129F	Screw
3	151H	Polyurethane recoil pad LOP 365 mm
4	485H	Self-tapping screw
5	486H	Stock end case LOP 365 mm
6	150W	Locking plate
7	149H	Stock spacer
8	457H	Polyurethane comb tall
9	381W	Stock assy LOP 365 mm
10	381W	Stock assy LOP 350 mm
11	380H	Polyurethane comb
12	484H	Self-tapping screw
13	483H	Comb base plate
14	152C	Sling attachment screw
15	188L	Removable sling swivel
16	146W	Fore-end follower
17	174W	Fore-end (wood) assy
18	289W	Washer
19	224W	Fore-end grub screw
20	489H	Complete Comfort kit LOP 350 mm
21	487H	Stock end case LOP 350 mm
22	488H	Polyurethane recoil pad LOP 350 mm

Pos. No.	Code	Description





Drawing 6C





Pos. No.	Code	Description
1	388W	Comfort stock
2	149C	Stock spacer
3	380G	Gel comb
4	379G	Chevrons assy
5	392W	Stock lock plate
6	052A	Elastic washer
7	053A	Nut
8	446X	Polyurethane recoil pad
9	390W	Fore-end Rilsan Soft Touch
10	289W	Washer

Pos. No.	Code	Description
----------	------	-------------

